



*Technology for the comfort*

The constructor's policy is of continuous improvement, it reserves the right to change design and specifications without notice

**YEAR 2020**



Member of Euroclima Group

# ABOUT BINI Clima S.r.l.

## *Headquarter in Rovereto (Trentino) - Italy*

Operating in the field of air heating since its foundation in 1919, Bini Clima started the production of hydronic units for air and water conditioning in 1977.

In the last years Bini Clima achieved a strong position in the global market and an increase in sales in emerging countries.

Since 2010 Bini Clima is a member of Euroclima Group.



Thanks to its geographical position, Bini Clima has easy access to the major European suppliers of high quality components.

# COMPANY FOUNDATION YEAR 1919

CAMERA DI COMMERCIO INDUSTRIA  
ARTIGIANATO E AGRICOLTURA

TRENTO

## SI CERTIFICA

che nel Registro delle Ditte della provincia di Trento risulta iscritta, ai sensi di legge, la ditta:

Numero di iscrizione, forma giuridica e denominazione, sede legale, attività o oggetto sociale: 673 soc. in nome collettivo  
OFFICINA DA FABBRO E FALEGNAME BELLI, MATTEOTTI E BINI

altre notizie:

Rovereto, vicolo dei Tintori n. 5  
officina meccanica (1/5/1919)

qualifica e generalità (luogo e data di nascita) dei firmatari e legali rappresentanti:

costituita: 1/5/1919; durata: a tempo indeterminato; firma: a tutti i soci sia collettivamente che singolarmente.

soci:  
BELLI PIO (Sopramonte-TN- 8/7/1881)  
MATTEOTTI ANTONIO (Rovereto 30/1/1883)  
BINI AUGUSTO (Nago 11/2/1884).

Si attesta inoltre che in data 30/6/1931 la ditta in parola ha cessato ogni attività.

Certificato rilasciato

il 13.2.1987

In carta libera ai sensi del D.P.R. 26.10.1972, n. 642 e successive modificazioni.

Prot. n. ....

IL SEGRETARIO GENERALE  
(dott. Ezio M. Tomasi)

Bollo .....  
Diritti di Segr. ... 6.000.  
Diritti di urg. ....  
Totale ..... 6.000.



1932 Officine BINI Augusto e Figli - Pranzo aziendale

# OUR GOALS

We offer high standards of quality, in components as well as in production, expertise in design and development of new solutions, flexibility and customer care.



Our products have been approved by the most important certified laboratories

# OUR GOALS



*Customer's requirements*

## **THE CUSTOMER ORIENTED APPROACH**



*Best solution*



*Design: 2D AUTOCAD – 3D INVENTOR  
Selection software*



# THE FACTORY



## ***PLANT Rovereto – 11.000 m<sup>2</sup>***

- Offices
- Sheet metal forming
- Painting
- Assembling
- Testing



# THE FACTORY



## ***SHEETS METAL FORMING***

- Laser cutting
- Automatic punching
- Sheets forming



# THE FACTORY



***PAINTING***  
(epoxy powder coating)

***ASSEMBLING***



***TESTING***



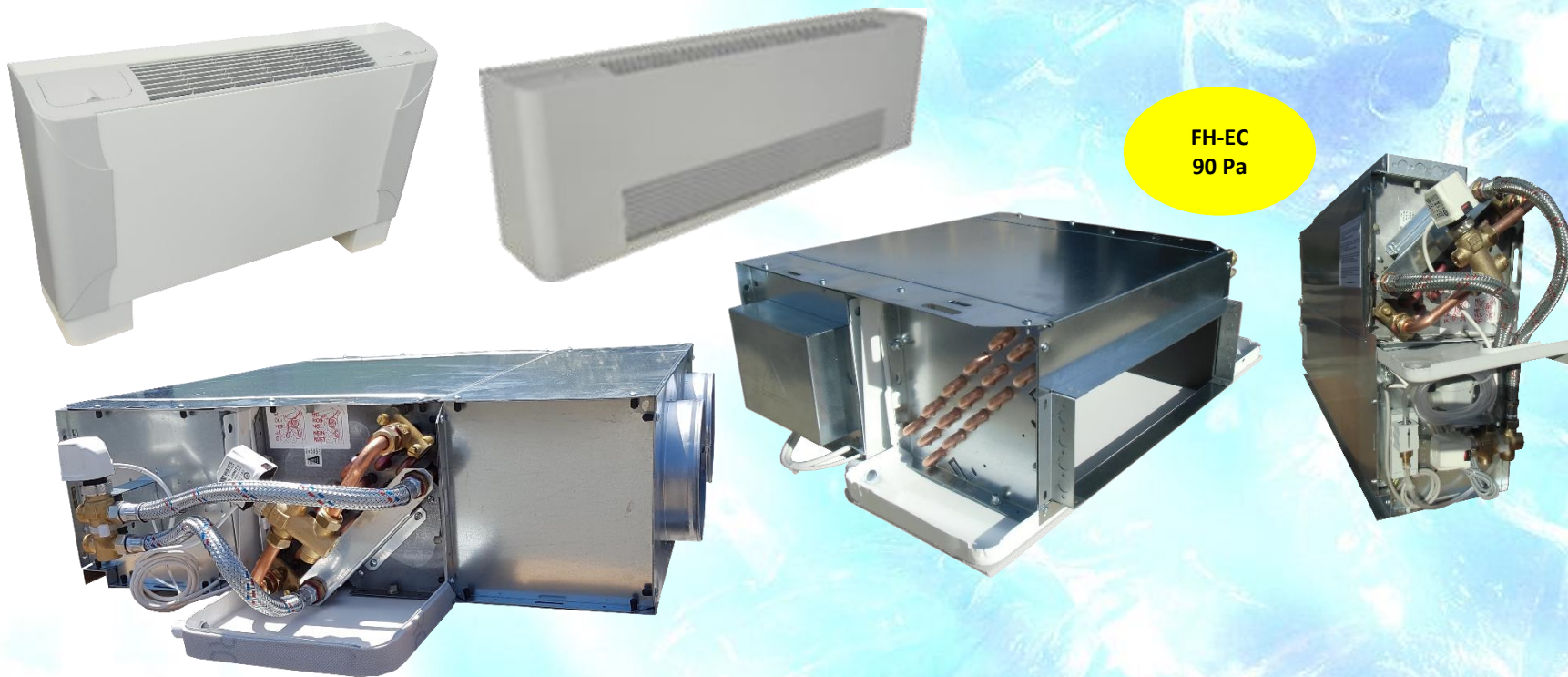
# PRODUCTS

- ✓ *Wide range of products*
- ✓ *Customized units*
- ✓ *Combined air and water conditioning*

- ❑ Standard & special fan coils
- ❑ Double skin units
- ❑ Underfloor fancoils
- ❑ Ceiling water cassettes
- ❑ Water High Wall units
- ❑ Packaged Air Handling Units

# PRODUCTS

**FAN COILS SERIES:** *standard (F), lowboy (L), ultra lowboy (U), ESP unit (FH)*



**Coil**

Cu/Al, 14,4 bar, Tmax 100°C, 6-8-10 tubes

**Motor**

V230-240/1/50-60 Hz, IP42, Class B, 6 speed / 0...10 Vdc, 4P

**Insulation**

Class 1, fire proof PE 5 / 12 mm closed cells

**Filter**

Class G2-EU2-M1 acrylic cleanable 10 mm thickness

**Nom. airflow**

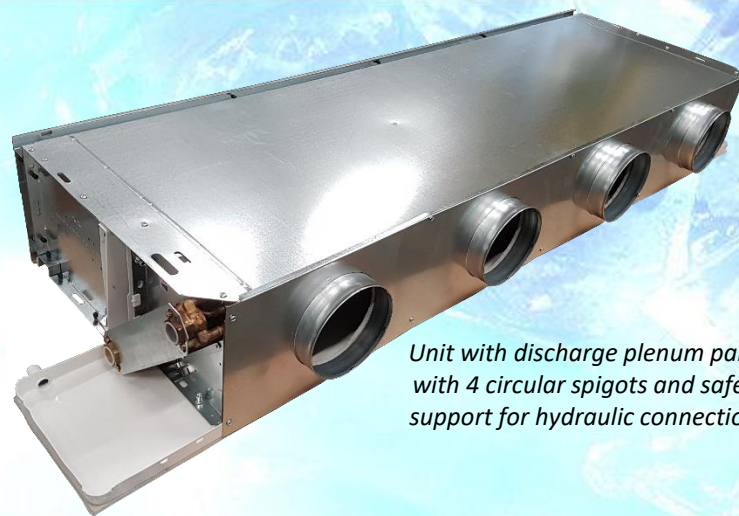
Up to 1.415 m<sup>3</sup>/h

# PRODUCTS

## FAN COILS SERIE: FK only horizontal



FK  
120 Pa



*Unit with discharge plenum panel with 4 circular spigots and safety support for hydraulic connections*

<b>Coil</b>	Cu/Al, 14,4 bar, Tmax 100°C, 8-10 tubes
<b>Motor</b>	V230-240/1/50-60 Hz, IP42, Class F, 5 speed, 4P
<b>Insulation</b>	Class 1, fire proof PE 5 / 12 mm closed cells
<b>Filter</b>	Class G2-EU2-M1 acrylic cleanable 10 mm thickness
<b>Nom. airflow</b>	Up to 1.460 m <sup>3</sup> /h

# PRODUCTS

## **FAN COILS SERIE: slim fancoil (SL & SL-EC)**

**130 MM THICKNESS**

Cooling -> up to 3,3 kW

Heating -> up to 4,1 kW



**Coil**

Cu/Al, 14,4 bar, Tmax 100°C, 8-10 tubes

**Motor**

V230-240/1/50-60 Hz, IP42, Class F, 3 speed / 0...10 Vdc, 4P

**Insulation**

Class 1, fire proof PE 5 mm closed cells

**Filter**

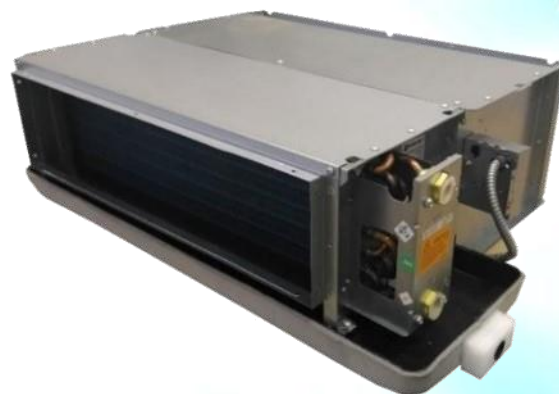
Class G2-EU2-M1 polypropilene

**Nom. airflow**

Up to 580 m<sup>3</sup>/h

# PRODUCTS

## **FAN COILS SERIE: CN only horizontal**



CN  
70 Pa

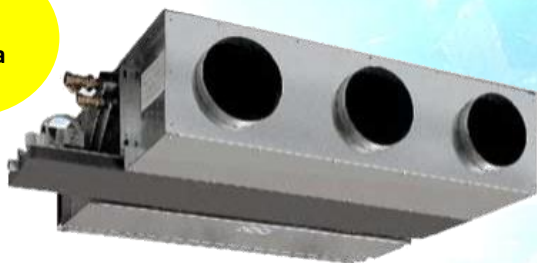
<b>Coil</b>	Cu/Al, 14,4 bar, Tmax 100°C, 8 tubes
<b>Motor</b>	V230-240/1/50-60 Hz, IP20, Class B, 3 speed, 4P
<b>Insulation</b>	PE 5 mm
<b>Filter</b>	Class G1-EU1-M1 acrylic cleanable 10 mm thickness
<b>Nom. airflow</b>	Up to 1.090 m <sup>3</sup> /h

# PRODUCTS

## FAN COIL SERIES: CK (150 Pa) – CE (120Pa) – CM (0Pa)



CK  
150 Pa



CE  
120 Pa

*Monoblock discharge plenum with 3 circular spigots*



**Coil**

Cu/Al, 14,4 bar, Tmax 100°C, 8-10 tubes

**Motor**

V230-240/1/50-60 Hz, IP20, Class B, 5 speed / 0...10 Vdc, 4P

**Insulation**

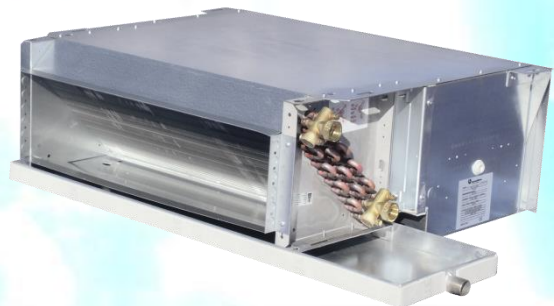
Class 1, fire proof PE 5 / 12 mm closed cells

**Filter**

Class G3-EU2-M1 cleanable 23 mm thickness

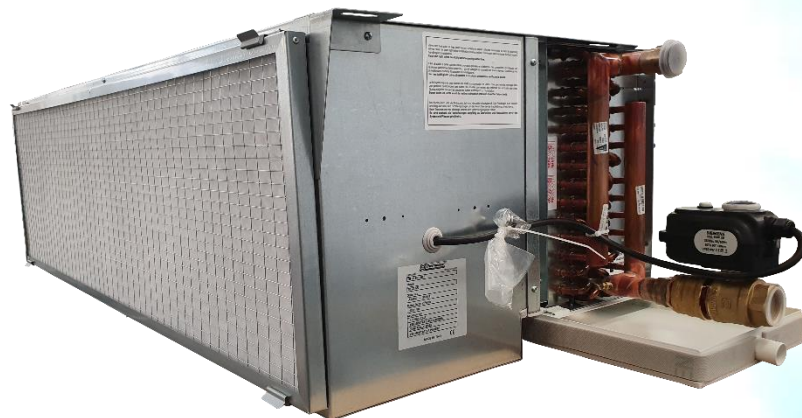
**Nom. airflow**

Up to 3.012 m<sup>3</sup>/h

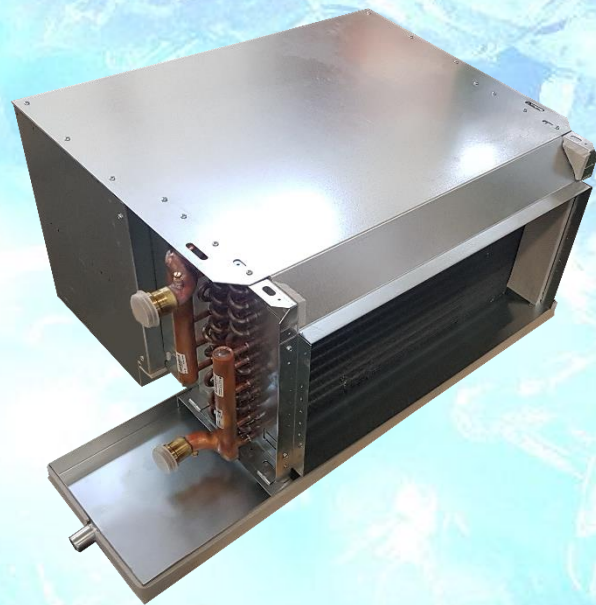


# PRODUCTS

## FAN COIL SERIE: TB (180Pa)



TB  
180 Pa



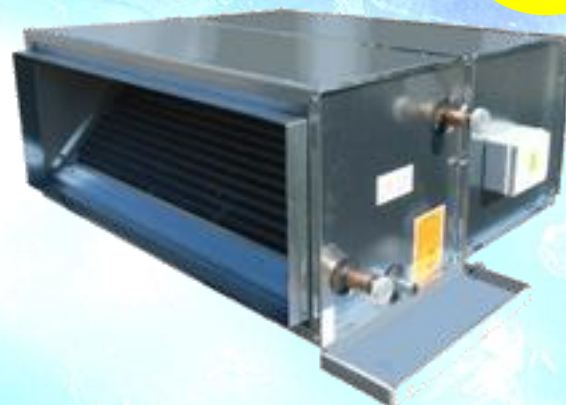
<b>Coil</b>	Cu/Al, 14,4 bar, Tmax 100°C, 12 & 14 tubes
<b>Motor</b>	V230-240/1/50-60 Hz, IP20, Class B, 5 speed, 4P
<b>Insulation</b>	Class 1, fire proof PE 5 / 12 mm closed cells
<b>Filter</b>	Class G3-EU2-M1 cleanable 23 mm thickness
<b>Nom. airflow</b>	Up to 4.880 m <sup>3</sup> /h

# PRODUCTS

**FAN COIL SERIES: TO (120Pa) – TO-EC (200Pa) – TH (250Pa)**



TO-EC  
200 Pa



TO  
120 Pa

<b>Coil</b>	Cu/Al, 14,4 bar, Tmax 100°C, 16 tubes
<b>Motor</b>	V230-240/1/50-60 Hz, IP22-55, Class B-F, 3 speed / 0...10 Vdc, 6P
<b>Insulation</b>	Class 1, fire proof PE 5 / 12 mm closed cells
<b>Filter</b>	Class G3-EU3-M1 cleanable 23 mm thickness
<b>Nom. airflow</b>	Up to 6.870 m <sup>3</sup> /h



# PRODUCTS

## FAN COIL SERIE: DS (From 50 to 400Pa)

Double skin panel with 20 Kg/m<sup>3</sup> fiber glass insulation



TH-DS  
250 Pa

**Coil**  
**Motor**

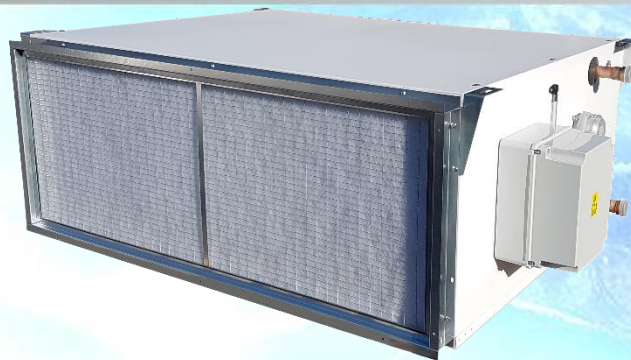
Cu/Al, 14,4 bar, Tmax 100°C, from 8 to 16 tubes  
V230-240/1/50-60 Hz, IP20, Class B, 3,5,6,speed / 0...10 Vdc, 4-6 P

**Filter**

Class G2-EU2-M1 / G3-EU2-M1 cleanable 10 / 23 mm thickness

**Nom. airflow**

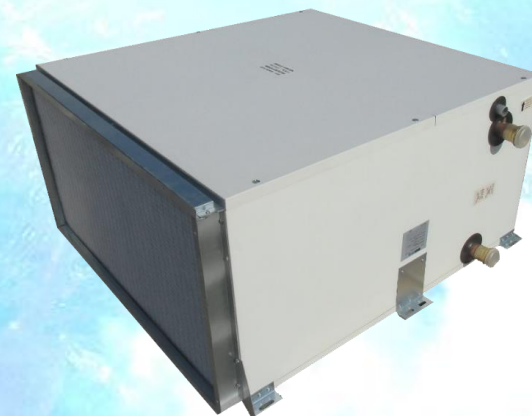
Up to 6.190 m<sup>3</sup>/h



TE-DS  
400 Pa

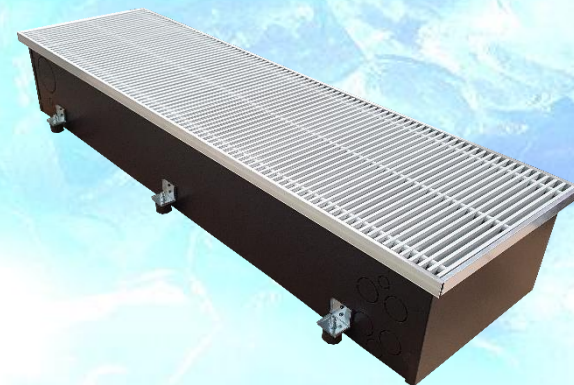
**Coil**  
**Motor**  
**Filter**  
**Nom. airflow**

Cu/Al, 14,4 bar, Tmax 100°C, 18 tubes  
V230-240/1/50-60 Hz, IP20, Class B / 0...10 Vdc  
Class G3-EU2-M1 cleanable 23 mm thickness  
Up to 9.100 m<sup>3</sup>/h

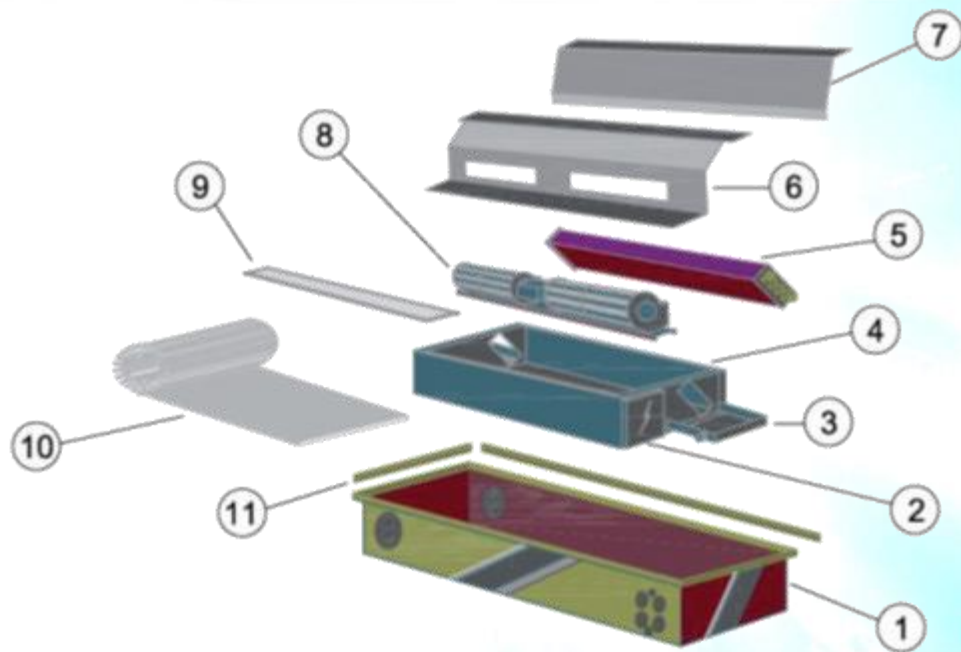


# PRODUCTS

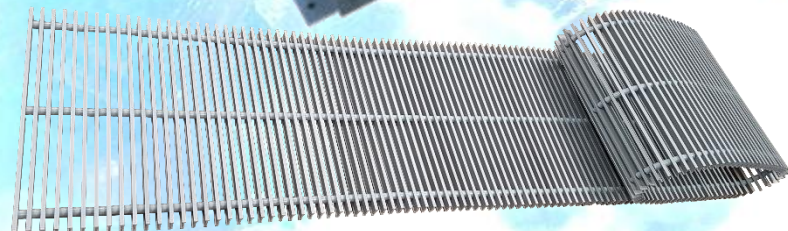
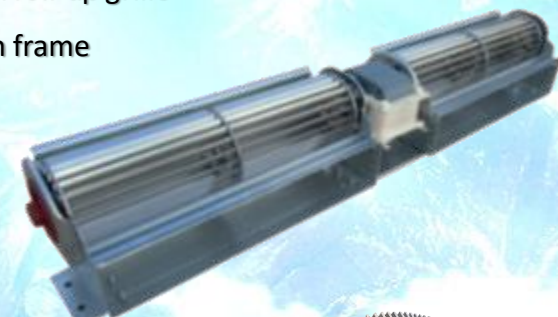
**UNDERFLOOR FAN COIL SERIES: FR-FP AC & EC motors**



# PRODUCTS



- ① External black housing
- ② Electric box
- ③ Drain pan
- ④ Internal casing
- ⑤ Water coil
- ⑥ Fan plate
- ⑦ Air bypass plate
- ⑧ Tangential fan
- ⑨ Air filter
- ⑩ Aluminium roll-up grille
- ⑪ Aluminium frame



<b>Coil</b>	Cu/Al, 14,4 bar, Tmax 100°C, 4-6 tubes
<b>Fan deck</b>	Tangential fan, V230-240/1/50-60Hz, IP20, Class B-F, 6 speed / 0...10 Vdc
<b>Insulation</b>	Class 1, fire proof PE 5 mm closed cells
<b>Filter</b>	3 mm nylon mesh
<b>Nom. airflow</b>	Up to 840 m <sup>3</sup> /h

# PRODUCTS

## CEILING WATER CASSETTES SERIES: CT AND CS

- High performances and innovative design for every kind of environment
- Optimized air distribution
- Two different types: with 2 and 4 ways

**CS unit**  
(2 way cassette)



**CT unit**  
(4 way cassette  
single&double)

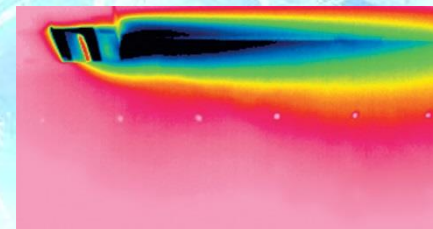
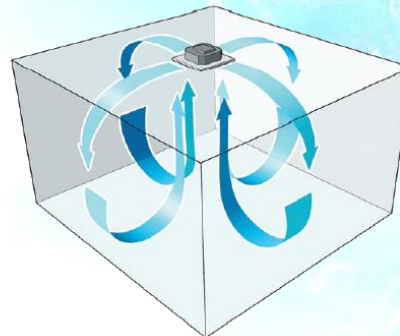


<b>Coil</b>	Cu/Al, 14,4 bar, Tmax 100°C
<b>Motor</b>	V230-240/1/50-60 Hz, IP42, Class B, 3-6 speed / 0...10 Vdc, 4P
<b>Insulation</b>	Class 1, fire proof PE 5 mm closed cells
<b>Filter</b>	Class G2-EU2-M1 acrylic cleanable
<b>Nom. airflow</b>	From 350 to 1.570 m <sup>3</sup> /h

# PRODUCTS

## CEILING WATER CASSETTE SERIE: CC SERIE – COANDA EFFECT

- **Coanda galva panel** (any kind of RAL available)
- **Horizontal** air diffusion Coanda effect
- **No stratification** of the air in the room
- **No air** on people's neck



# PRODUCTS

## **WATER HIGH WALL SERIE: HW only 2 pipes**

Ionization system, aimed to purify air and neutralize microbes. Ideal for hotels, flats and offices



**Nom. airflow**

From 270 to 850 m<sup>3</sup>/h

**Tot. cooling capacity (kW)**

From 1,77 to 4,94

**Tot. heating capacity (kW)**

From 5,04 to 7,73

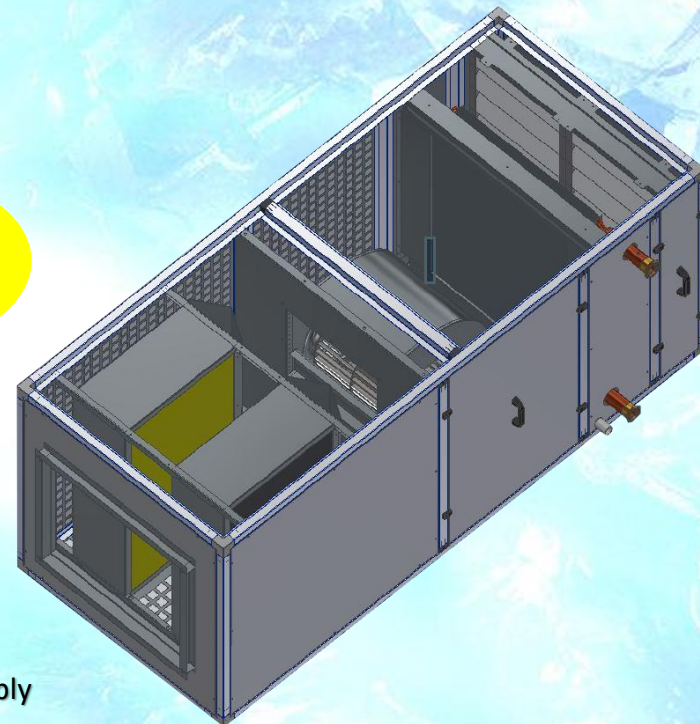


# PRODUCTS

## PACKAGED UNITS SERIES: TME DOUBLE SKIN

*ultrasilent unit with precutted internal sheets and silencers*

Up to 300 Pa  
and 14.000 m<sup>3</sup>/h



- Available in **n. 4 sizes**, thick from 900 to 2.610 mm
- **Reduced height** only **900 mm**, length 1.500 mm
- High efficiency **EC fan motor**, V230-240/1/50-60Hz unit power supply
- Heat exchanger (4, 5 or 6—rows) with **hydrophilic coated aluminium coil and inner groover copper tube**, effectively increasing the heat transfer area of this unit
- Double skin structure 25mm with alu profile, 0,7 mm external prepainted sheet, 70 kg/m<sup>3</sup> glasswool insulation, 1,0 mm thick internal sheet
- Silencers on supply side
- Precutted internal galva sheet on fan section and on silencers section for **ultra silent performance**
- Double filter (AEROFILL 48 mm prefilter – efficiency F7 and GARDAIR 23 mm filter – efficiency G3)

# PRODUCTS



*Silenced supply*



*Fan section*

<b>Coil</b>	Cu/Al, 14,4 bar, Tmax 100°C
<b>Motor</b>	V230-240/1/50-60 Hz, Class B / 0...10 Vdc
<b>Filter</b>	Doule filter - class F7 acrylic cleanable 47 mm and class G3-EU3-M1 acrylic cleanable 23 mm
<b>Nom. air flow</b>	Up to 12.865 m <sup>3</sup> /h



# PRODUCTS

## **PACKAGED AIR HANDLING UNITS SERIES: TM-H/V DOUBLE SKIN**

Designed for maximum application flexibility, they are suitable for indoor installation and resolve brilliantly the fresh air problem wherever a central air handling unit is not or cannot be installed.



450 Pa



**Coil**

**Motor**

**Filter**

**Nom. air flow**

Cu/Al, 14,4 bar, Tmax 100°C

V400-415/3/50-60 Hz, IP55, Class F, 1 speed, 4P

Class G3-EU3-M1 acrylic cleanable 48 mm

From 2.500 to 20.000 m<sup>3</sup>/h

# REFERENCES



## **PALM ISLAND**

14.400 units installed at Dubai island apartments

OEM (2007-2008)

# REFERENCES



## ABU DHABI MARINA

Dubai 2016

950 units

## BULGARI'S NEW SEASHORE ISLAND HOTEL

Dubai 2016

1.600 units



# REFERENCES



## DOHA METRO RED LINE & DOHA METRO RLNU UNDERGROUND STATIONS

Qatar 2017-2018

472 units

## HEART OF DOHA

Qatar 2014-2015

4.000 units



# REFERENCES



## **RIYADH METRO LINE 3**

Saudi 2017-2020

1.574 units

## **JABAL OMAR DEVELOPMENT**

Saudi 2015-2016

4.000 units



# REFERENCES



**NBK**  
**National Bank of Kuwait**  
Kuwait 2016  
858 units



**LAKE MALL**  
Kuwait 2016  
125 units

# REFERENCES



## **KUWAIT UNIVERSITY – Academic Support Facilities**

Kuwait 2016

1.886 units

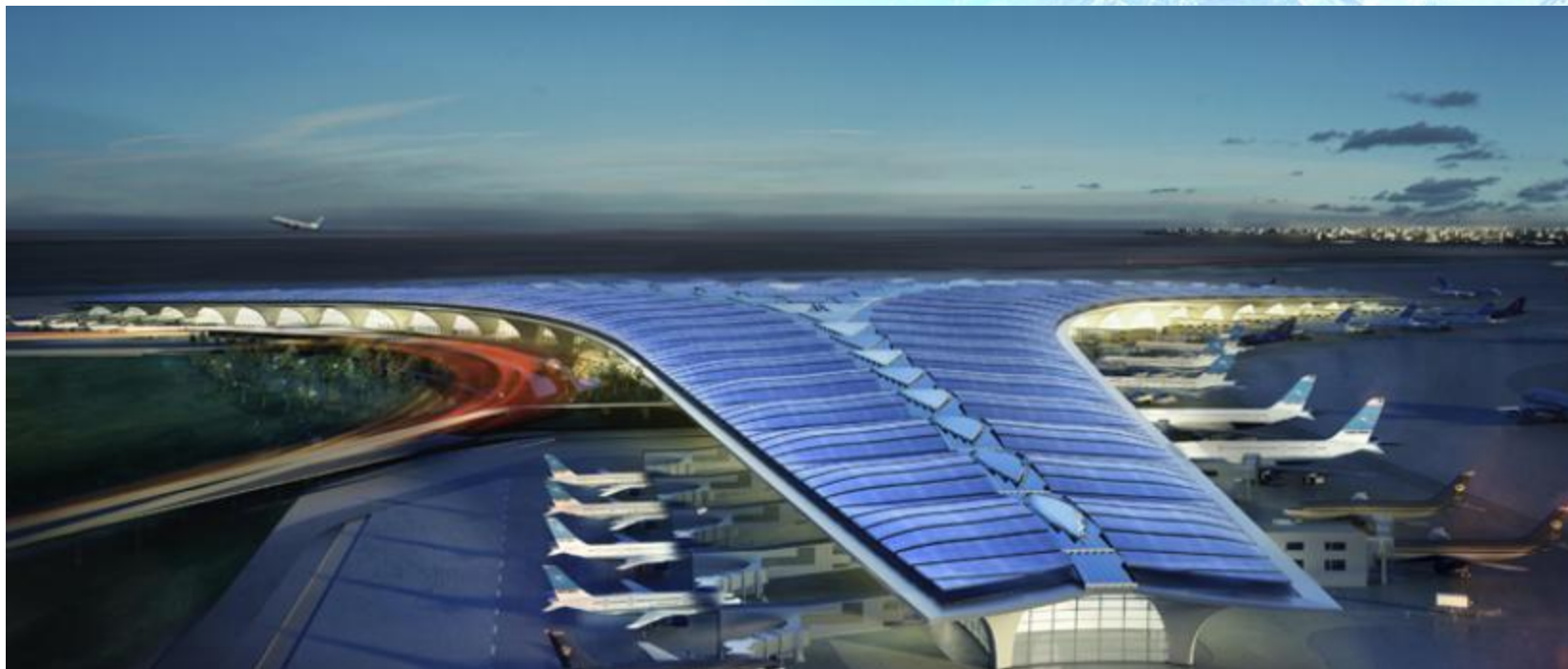
## **KUWAIT UNIVERSITY - SAAF Student Activities and Athletic Facilities**

Kuwait 2019

192 units



# REFERENCES



**KIA TERMINAL**  
**Kuwait International Airport**  
2019 and 2020  
1.840 exposed and double skin units



# REFERENCES



**AUSTRALIAN FEDERAL  
POLICE BUILDING**  
Australia – Brisbane 2016  
5 units



**TRAVELODGE HOTEL**  
Australia – Mascot 2016  
225 units

# REFERENCES



## JUVENTUS STADIUM

Torino 2016

20 underfloor units

# REFERENCES



**BANCA D'ITALIA**  
**Headquarter**  
Roma 2003  
300 units



**MUSEO EGIZIO**  
Torino 2012  
25 units

# REFERENCES



## UNIPOLSAI ASSICURAZIONI

Torino 2011

38 units

## CHIESA DEGLI EREMITANI

Padova 2011

40 units



# REFERENCES



## MINISTRY OF MARINA MERCANTILE

Roma 1998

200 units

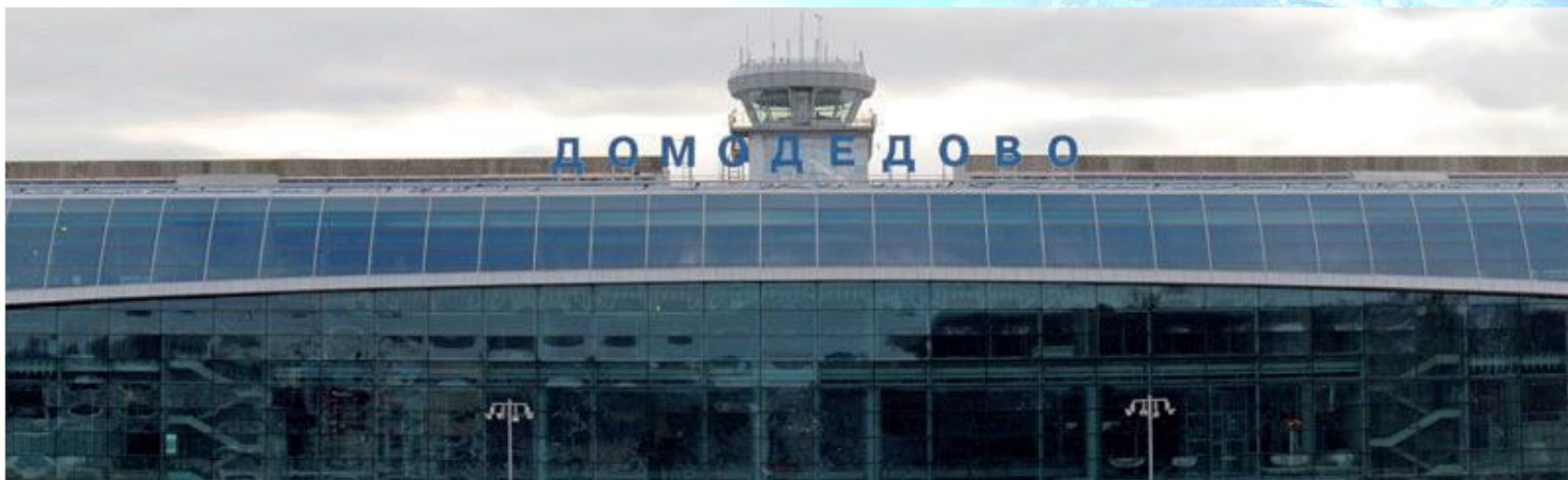
## SANTA LUCIA RAILWAY STATION

Venezia 2000

90 units



# REFERENCES



## **DOMODEDOVO AIRPORT**

Moscow, Russia 2012-2014 and 2017

1.300 double skin units

350 double skin units

# REFERENCES



## **TURKISH AMBASSADE**

Paris, France 1998

180 units

## **EUROPEAN UNION OFFICES**

Bruxelles, Belgium 2006

430 units



# REFERENCES

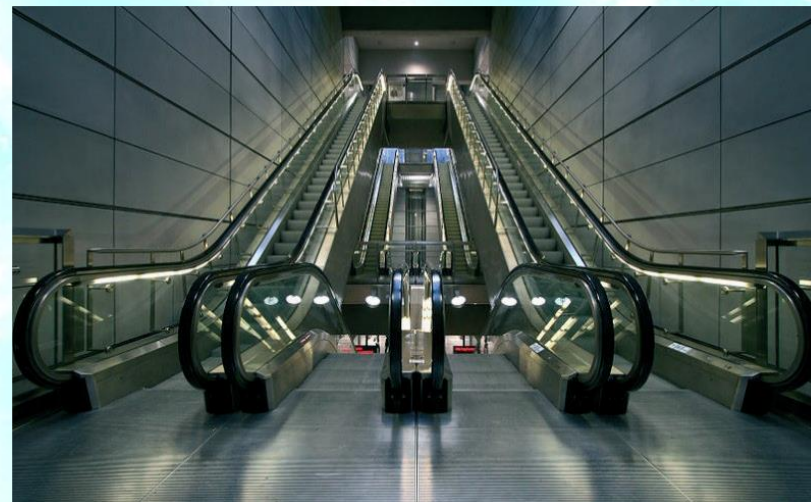


## **KURTIS PLAZA HOTEL**

Warsaw, Poland 1992

400 units

**METROTEAM**  
Copenhagen, Denmark 2016-2018  
370 units





# REFERENCES



## HILTON SHARKS BAY RESORT

Sharm El Sheik, Egypt 1998

520 units

**NATIONAL LIBRARY**  
Alexandria, Egypt 2002  
60 units

